




CROSSMAX™ SL DISC

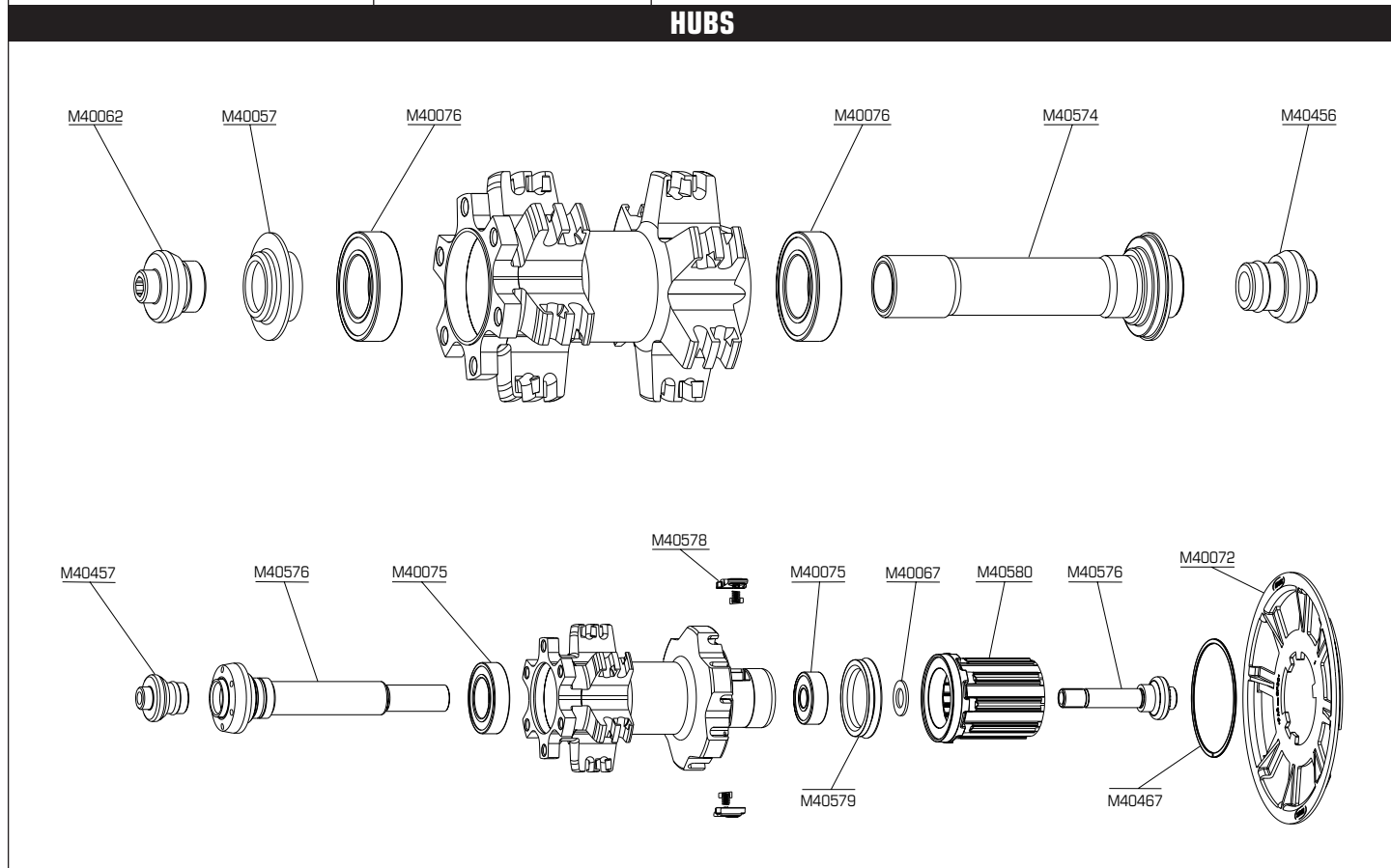
WHEEL WEIGHT WITHOUT SKEWER :
FRONT : 770 g.
REAR : 915 g.

REF. WHEEL :
FRONT : M25100
REAR : M25101
PAIR : M29083

Use: **Use only on a cross country MTB equipped with disc brakes.**

Any other use (such as on a tandem, road bike, cyclo-cross bike...) is highly inadvisable and is the sole responsibility of the user, which voids the Mavic® warranty.

RIM		
COMMERCIAL REFERENCES	VALVE HOLE Ø	RECOMMENDED TIRE WIDTH AND PRESSURE
Front : M40741 Rear : M40742 Do not use rim tape	 Ø : 6,5 mm UST valve M40495 Presta with Schrader adapter Length: ≥ 32 mm	 Dimensions: Ø 26' ETRTO compatible 559 x 19 Recommended tire width: 1,5 - 2,3  Recommended tire pressure: See page 6



MAINTENANCE: Clean with a dry cloth or soap and water. Do not use pressurized water.

Caution : The parts on the FTS-L free wheel (pawl assembly, springs, free wheel body) are not compatible with those on the FTS free wheel.

WHEEL BUILDING			
FEATURES :	Profiled Zicral spokes with anti-rotation system Integrated nipples with brake ring (self-locking)	LACING PATTERN :	Front : 2 cross pattern on both sides Rear : 2 cross pattern on both sides
REFERENCE :	Front and rear ORL : M40743 length 268 mm (per 12) Rear CRL : M40745 length 250 mm (per 12)	TENSION :	front disc side : 120 - 130 kg Rear disc side: 130 - 140 kg

ACCESSORIES	
WHEEL DELIVERED WITH :	
<ul style="list-style-type: none"> • Front Mavic BX601 quick release skewer: M40140 • Rear Mavic BX601 quick release skewer: M40141 • Chain Disc (with rear wheel) : M40072 • Free play adjustment wrench (with rear wheel) : M40123 	<ul style="list-style-type: none"> • UST valve : M40495 • Spoke tension and maintenance wrenches (with rear wheel) : M40494 • Computer magnet (with front wheel) : M40540 • Instructions and warranty card

MAINTENANCE			
• Replacing the front axle:	See page 17	• Replacing the rear bearings	See page 22
• Replacing the front bearings	See page 17	• Replacing the spokes	See page 24
• Replacing the rear axle	See page 19	• Replacing the front rim	See page 29
• Replacing the free wheel body	See page 21	• Replacing the rear rim	See page 30